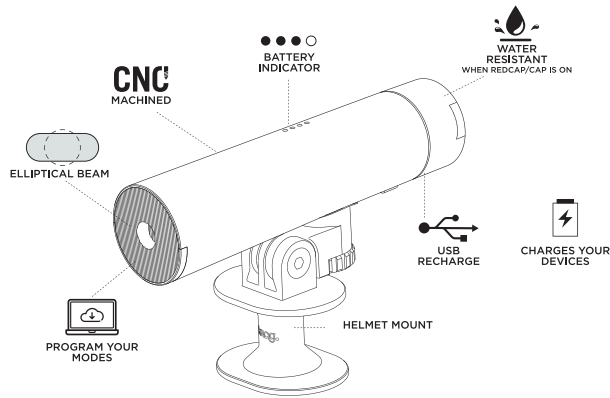


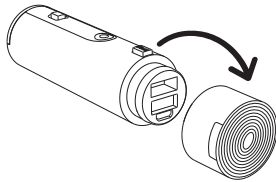
PWR rider duo quick start guide



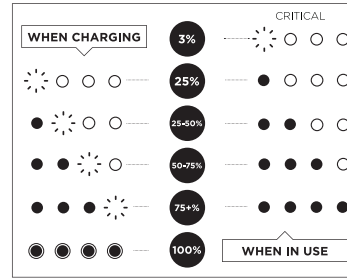
CHARGING YOUR LIGHTS

PWR Commuter and PWR Rider use a micro USB input to charge. Find this under the end cap. Press RED button to release cap.

You cannot charge the light through the larger USB type A port. This is for charging other devices with your PWR.



BATTERY INDICATOR



Battery Indicator can vary depending on operating conditions. Charge above 10°C

HOT TIP: USING AN IPAD CHARGER IS FAST! (12W USB Power Adapter)

CHARGING ANOTHER DEVICE FROM YOUR LIGHT

Both PWR Commuter and PWR Rider have the ability to charge another USB device, like a phone, tablet, GoPro, or GPS.



Don't forget – if you plan to use your light on your helmet/pole later, leave enough charge after using it as a power bank.

To charge a device with the light off

- Connect the device's charge cable to the female USB port on the rear of the light.
- Press the button to confirm the device is plugged in.

To charge a device with the light on

- Connect the device's charge cable to the female USB port on the rear of the light.
- Press and hold the button until the light illuminates.

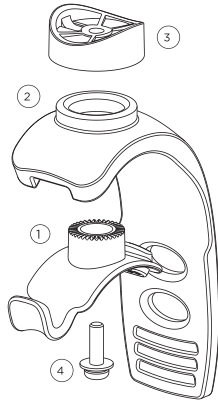
HOT TIP: WHEN CHARGING, CLIP THE CAP TO THE STRAP SO YOU DON'T LOSE IT.

N.B, if all battery indicator LED's flash during charge, this means the device is not compatible.

ATTACHING THE STRAP TO YOUR NEW LIGHT

Remove the light from the packaging and throw away that black screw.

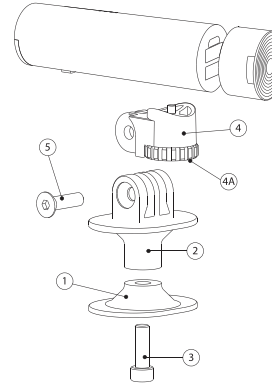
- Push the plastic hook (1) into the base of the silicone strap (2).
- Fit the plastic cap (3) over the top ring of the silicone strap.
- Align the centre of the strap assembly with the brass screw thread on the underside of the charger light.
- Insert the supplied screw (4) and tighten firmly with supplied allen key.



HOT TIP: BE CAREFUL NOT TO OVERTIGHTEN.

FITTING YOUR RIDER DUO TO YOUR HELMET WITH THE MOUNT:

- Separate the (1) helmet mount base and (2) mount top using a 5mm allen key on the (3) white nylon bolt.
- Find a suitable vent in your helmet that is ideally central to help balance.
- Re-assemble the base and top part of the helmet mount assuring that the base is not touching your head once in place.
- Use a 5mm allen key to clamp the helmet mount in place, be careful not to over tighten the mount and damage your helmet.
- Insert the (4) 2 prong charger light mount into the (2) helmet mount top and tighten using a 3mm allen key
- Use the (4A) thumb screw to attach the light to the charger light mount.
- Loosen the (5) clamp bolt and (4A) thumb screw to adjust the angle of your light.



MODES / RUNTIMES*

MODE	LUMENS	RUNTIME (Without redcap)	REDCAP	CHARGE DEVICES WHEN FRONT LIGHT IS ON
Ride	450	2,00hr	STEADY	YES
Commute	200	5,50hr	STEADY	YES
Stamina	50	16,00hr	STEADY	YES
Day Flash	450	7,00hr	FLASH	NO
Strobe	200	10,00hr	FLASH	NO
Eco-Flash	50	90,00hr	FLASH	NO
Pulse	200	11,00hr	STEADY	YES

The current to the USB outlet needs to be steady to charge your device properly. (There's no problem if you choose to charge your phone whilst using the front light in a rear flash mode, but the charge will be intermittent and inefficient)

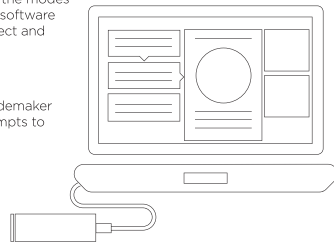
See ModeMaker to adapt your number & nature of front & rear modes.

PROGRAM YOUR MODES - MODEMAKER APP

Knog's ModeMaker app allows you to update the modes for any PWR bike light. Simply download the software from knog.com.au, plug your light in, then select and tailor modes from the menu.

GETTING STARTED

- Download the app from knog.com.au/modemaker
- Plug the light in and follow on-screen prompts to register your product.
- Follow tutorial to update your modes.



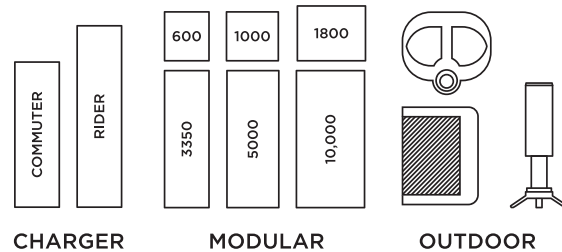
HOT TIP: IF YOU WANT A LONGER RUNTIME, REDUCE THE SPOT INTENSITY, SETTING A BRIGHTER LIGHT WILL REDUCE THE RUN TIME.

WARRANTY INFO

The Rider Duo and helmet mount are guaranteed for 2 years against manufacturing defects only. The battery is guaranteed for 6 months against manufacturing defects only. See the website for more details.

knog.com.au/pwr

PWR range



PWR mounts and accessories also available

PWR rider duo

