

Mounting of additional parts

DRAWBAR EXTENSION DRILLING

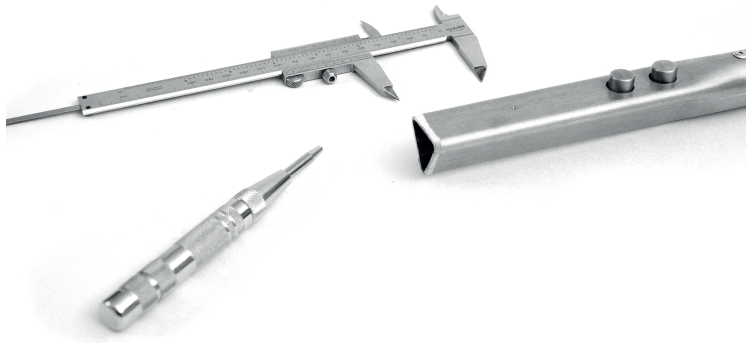
Required tools:

Drill, centre punch, drill bit metal 6.5 or 7.0 mm, reamer metal

Step 1:

Mark the drilling position on the drawbar (not the extension!).

Centre punch the position 40 mm from the bar's end centred on its top surface.



SECURING LOADS USING THE DRAWBAR EXTENSION

In order not to strain the drawbar tubes and avoid wave motions between drawbar, load and trailer, long loads have to be tightly fastened to the drawbar at the very front end. Shown on the picture, you can see long logs fastened to the drawbar using tension belts at both ends and a safety flag! Pay attention to the maximum loading capacity!



Mounting of additional parts

Step 2:

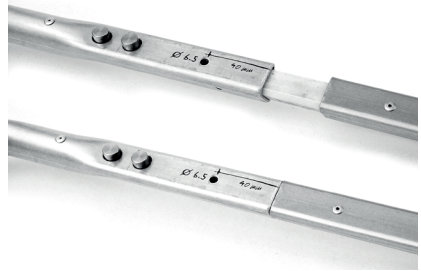
Using a 6.5 or 7 mm bit, drill a hole only into the top surface. If possible use a stand up drill. Deburr the drilling with the reamer.



Step 3:

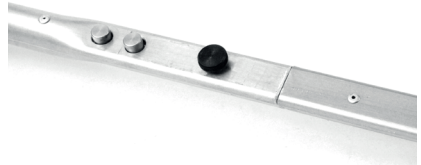
Insert and push the extension all the way into the drawbar's shaft.

It is important that extension and drawbar are sitting plane on each other.



Step 4:

Make sure the knurled screw is sitting and tightend well.



PLEASE NOTE!

The connection of drawbar and extension has to be as firm as possible. To ensure that, the PU-pivot is milled precisely and you will have to use some force to insert it!

