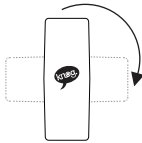


# POP<sup>knog.</sup>



**Battery  
Included**



**Choice of  
Orientation**



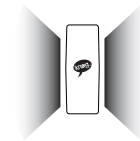
**Max  
Run Time**



**5 Modes**



**Water  
Resistant**

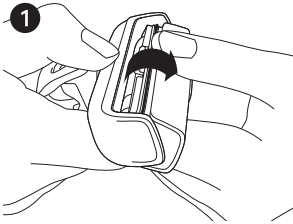


**Includes Side  
Illumination**

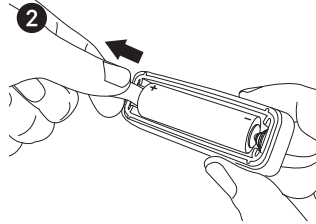


**Tool-Free**

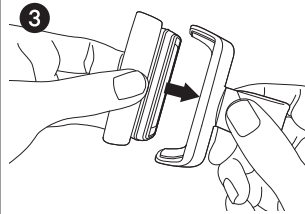
## GET STARTED



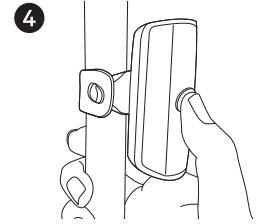
**1**  
Rotate the unit to  
remove from rear  
housing



**2**  
Take out the battery-  
saver tab. Check your  
+/- when you put the  
battery back.



**3**  
Push the unit back  
together firmly.



**4**  
Press and hold for  
on/off, press quickly  
to switch modes.